



2,450 SQFT | 3-4 BEDROOMS | 3 BATHS

## STAND OUT FEATURES

### EXTERIOR

- James Hardie Siding
- Stone accents on front elevation
- Fully sodded lawn with multi-zone Irrigation System
- Massive 12x22 screened porch with ceiling fan/light

### INTERIOR

- Gorgeous coffered ceilings & wainscoting trim in Foyer & Formal Dining Room
- Choose the Office option instead of Formal Dining Room!
- Vaulted ceilings accentuate open floor plan through the Great Room, Kitchen & Dining Area
- Bonus Room or 4th bedroom upstairs with full bath & closet

### KITCHEN

- 42" maple cabinets in a variety of paints & stains with soft close doors & drawers
- Tile back splash with under cabinet lighting
- Granite countertops & generous stainless steel farm sink
- Whirlpool Stainless Steel Appliance Package: electric cooktop with range hood, dishwasher, wall oven & microwave combo
- Large closet pantry
- Wonderful 7' granite eat-in island with decorative post leg

### MASTER SUITE

- Located on the 1st Floor
- Presidential ceiling with ambient rope lighting
- Enormous Walk-In closet

### MASTER BATH

- Tiled master bath shower with mosaic accent strip, bench seat and storage niches
- Dual shower heads include a handheld & stationary
- Drop-in tub with tile surround and privacy glass window
- Dual sink vanity with coordinating framed mirrors
- Linen closet conveniently located next to water closet
- Stunning Master bath upgrade option available!

### RIPTIDE EXTRAS

- Multiple fireplace options from which to choose!
- Hardwood floors throughout the main living spaces
- Lyric Alarm & Comfort System that can be controlled via app!
- Navien Tankless Gas Water Heater
- HERS Certified by RESNET for energy efficiency!
- 7 1/4" baseboards throughout plus 3 1/4" door and window casings with custom window sills!

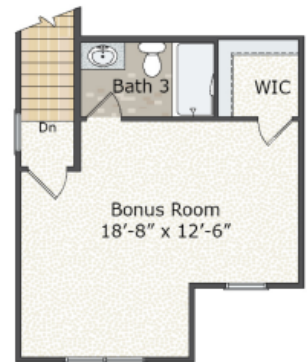
# THE HARVARD

2,450 SQ. FT.

## 1ST FLOOR



## 2ND FLOOR



Master Bath  
Option #1



Dining Room/Office  
Window Seat  
Option #1



Fireplace Option #1  
45" Dual Sided



Fireplace Option #2  
45" Linear